

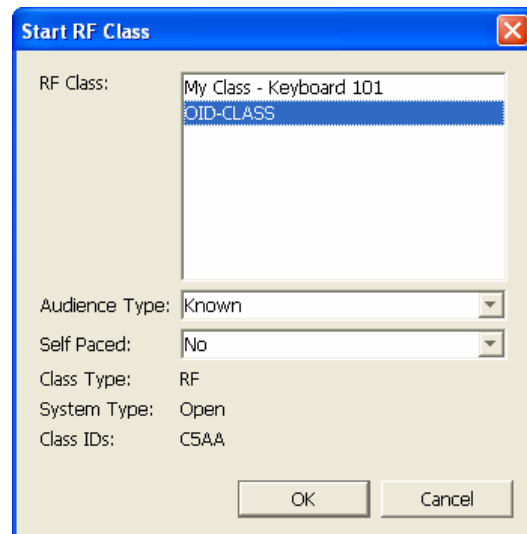
InterWrite PRS: Running a Session in PRS

A PRS Session is the presentation of a lesson to a class. This guide shows how to create and run a session using the PRS software. If you are using PRS questions in PowerPoint, please refer the PowerPoint Session guide.

1. Connect the receiver to your computer following the steps in the installation guide.
2. Launch the PRS software. The Start RF Class dialog displays.

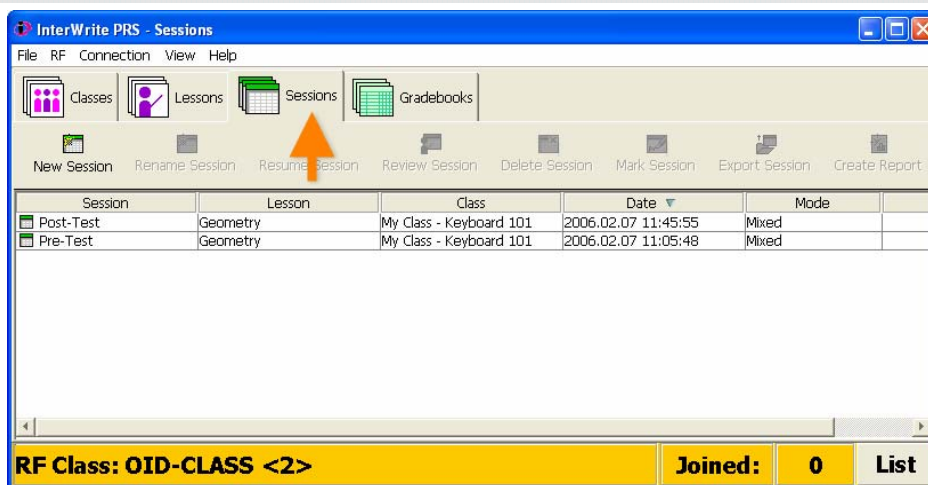
3. Select your RF Class options:
 - **Class**
 - **Audience Type**
Known - student IDs are recorded with responses for graded sessions.
Anonymous - no student IDs are recorded.
 - **Self-Paced**: Yes/No
 Self-paced allows students to answer questions in any order at their own pace.

Then click **OK**.



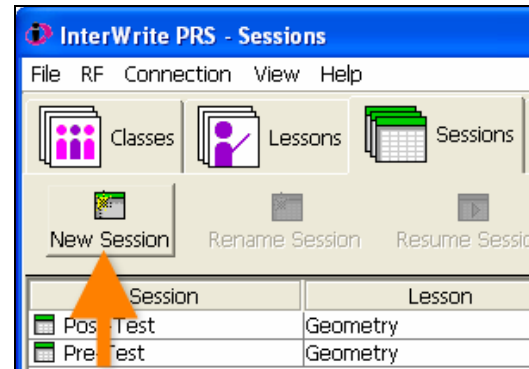
The PRS interface has tabs for each of four modules: **Classes**, **Lessons**, **Sessions**, and **Gradebooks**.

4. Select the **Sessions** tab to open the Sessions module.



The module displays a **Sessions List** containing all the sessions saved by the instructor. At the bottom of the window, you'll see the name of RF Class which has started, the RF channel it is using, and the number of students who have joined the class.

5. Ask students to "join" the class using their clickers. As students successfully join, the **Joined:** number will increase. Click **List** if you want to see which clickers have joined.
6. Click **New Session**.



The **New Session** window opens:

7. Edit the **Session Name**, if desired. The default name is the current date.

The **Audience Type**, **Self Paced**, and **Class** selections from the Start RF Class dialog display here but are not editable. To change these settings, start the class again.

8. Select a **PRS Lesson** or select **No Lesson** if you want to ask questions through some other means besides PRS or PowerPoint (such as orally).
9. Select an option for **Autostart Questions**: Yes/No
10. Select **Display Mode: No Grid**. The RF clickers UCLA uses display confirmation on the clicker screen, so no Response Grid is required.

11. Select an option for **Show if Correct on Clickers:** Yes/No

12. Leave the option for **Collect Homework** unchecked. (See PRS Homework Tutorial.)

The default settings for **Automatically Show Chart** and **Automatically Advance Questions** were set for each class in the Classes module. You can override these settings for individual lessons if you wish:

13. Select an option for **Automatically Show Chart:** Yes/No. If you select Yes, a Results Chart with student responses displays immediately after a question ends.

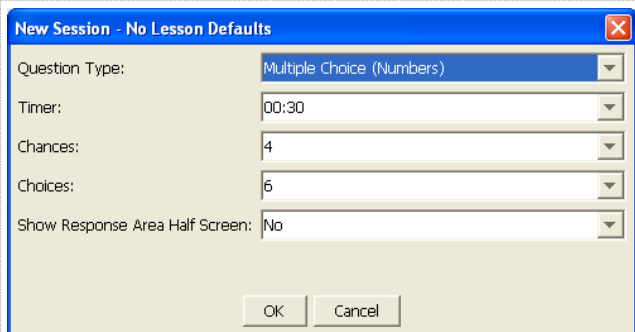
14. Select an option for **Automatically Advance Questions:** Yes/No. If you select Yes, immediately after one question ends (or when the Results Chart is closed), the next question will start.

15. Click **OK** to start the PRS session.

16. If you selected **No Lesson** in step #8, you will need to set lesson options:

- **Question Type**
- **Timer**
- **Chances**
- **Choices**
- **Show Response Area Half Screen**

Then click **OK**.



New Session - No Lesson Defaults

Question Type: Multiple Choice (Numbers)

Timer: 00:30

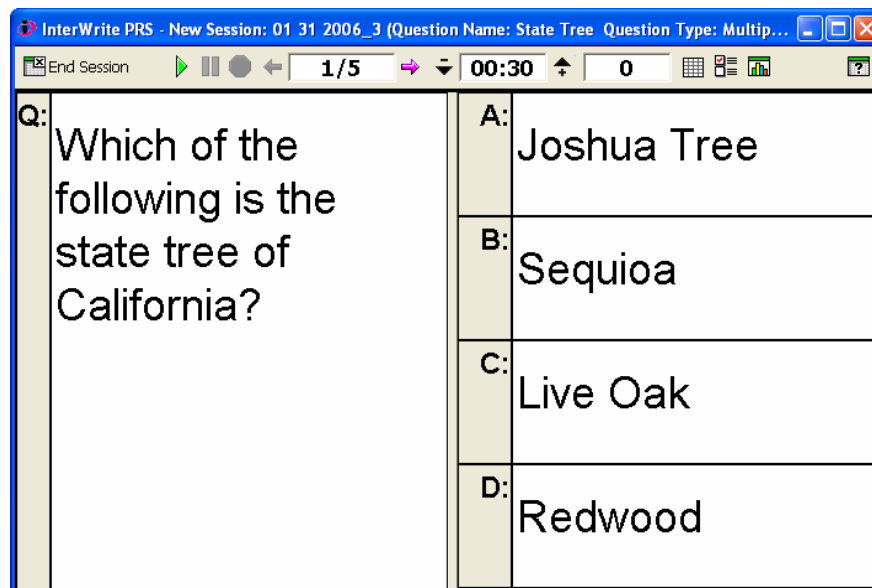
Chances: 4

Choices: 6

Show Response Area Half Screen: No

OK Cancel

The first question displays in a PRS Session window:



InterWrite PRS - New Session: 01 31 2006_3 (Question Name: State Tree Question Type: Multip...

End Session 1/5 00:30 0

Q: Which of the following is the state tree of California?

A: Joshua Tree

B: Sequoia

C: Live Oak

D: Redwood



For each question, you will see:

- **Question Number / Total Number of Questions**
- **Countdown Timer**
- **Number of Unique Student Responses Received**

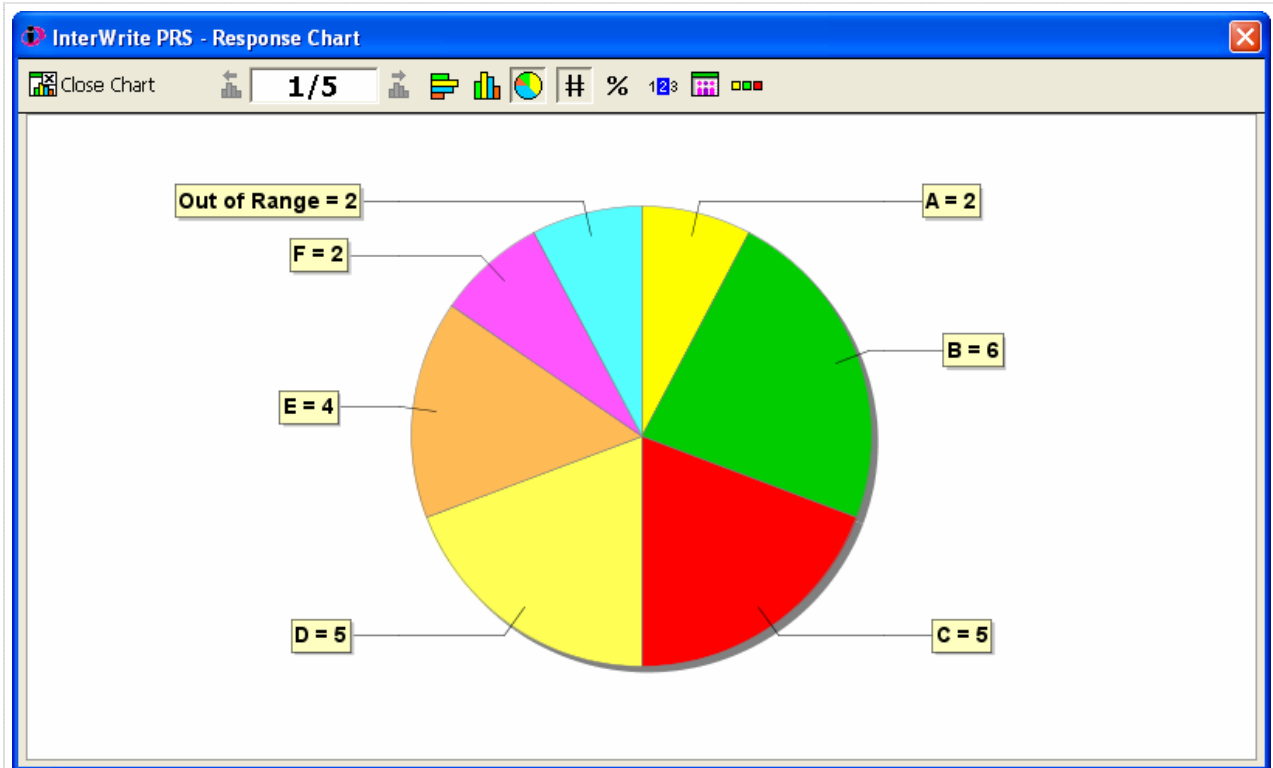
17. Use the buttons at the top of the window to run each question. You may need to maximize the PRS question window to see all the button options.

- **Start Question**
- **Pause Question**
- **Stop Question**
- **Go to** **Previous** or **Next** **Question**
- **Increase** or **Decrease** **Time by 15 Seconds**


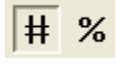



18. To insert a new question "on the fly", click the **Insert a Question** icon .


19. Create the new question, then click **Insert**. The question displays immediately in the session and appears in session results. However, it will NOT be added to the previously saved lesson you are using for this session.

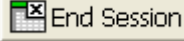
20. When a question has ended, the Response Chart displays automatically if that option was selected in the session settings, or by clicking the **Show Chart** button.



Use the buttons across the top of the chart to:

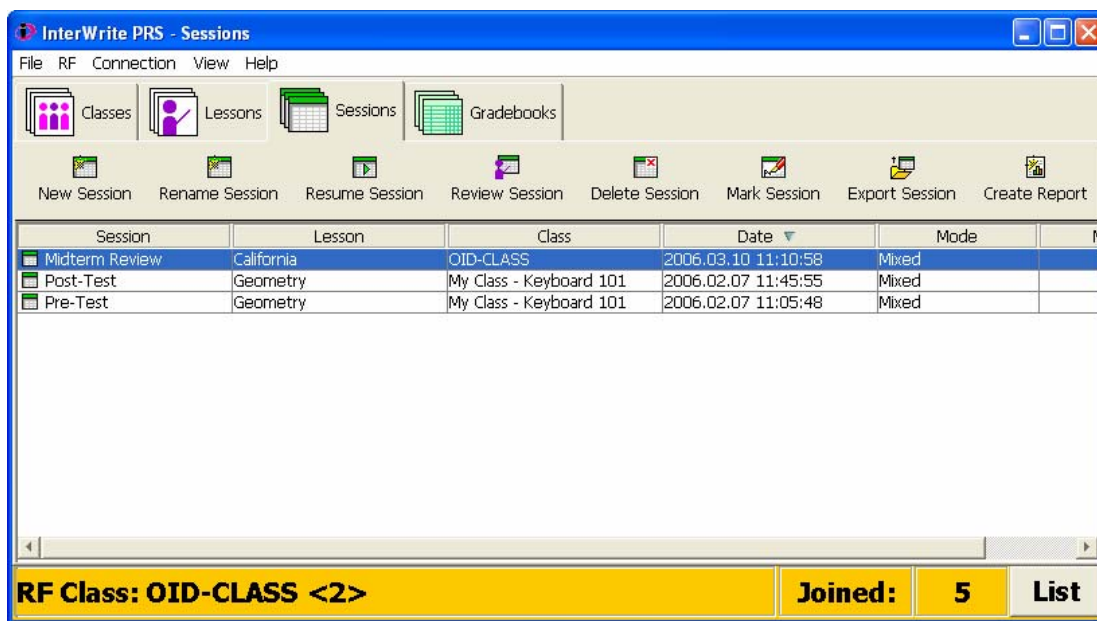
- Change the chart type (**Horizontal**, **Vertical**, or **Pie Chart**) 
- Switch between displaying **Number Chart** or **Percent Chart** 
- **Show/Hide Answer** 
- **Display Response Details** (name, response, time, etc.) in new window 
- **Show Chart Legend** 

21. Click **Close Chart**  to return to the question display.

22. When you have completed your final question, click **End Session** .

23. Click **Yes** to confirm you want to end the session.

You return to the Sessions module and the completed session displays in the list:



The screenshot shows the 'InterWrite PRS - Sessions' window. It features a menu bar (File, RF, Connection, View, Help) and a toolbar with icons for 'Classes', 'Lessons', 'Sessions', and 'Gradebooks'. Below the toolbar is a row of action buttons: 'New Session', 'Rename Session', 'Resume Session', 'Review Session', 'Delete Session', 'Mark Session', 'Export Session', and 'Create Report'. The main area contains a table with the following data:

Session	Lesson	Class	Date	Mode
Midterm Review	California	OID-CLASS	2006.03.10 11:10:58	Mixed
Post-Test	Geometry	My Class - Keyboard 101	2006.02.07 11:45:55	Mixed
Pre-Test	Geometry	My Class - Keyboard 101	2006.02.07 11:05:48	Mixed

At the bottom of the window, there is a yellow status bar with the text 'RF Class: OID-CLASS <2>' and a summary box showing 'Joined: 5' and 'List'.

24. Select a session and use the buttons above the list to:

- **Rename Session**
- **Resume Session**
- **Review Session**
- **Delete Session**
- **Mark Session** (see **How to Mark a Session** tutorial)
- **Export Session**
- **Create Report**

25. To sort the sessions list, click the column header (Session, Lesson, Date, etc.)

TEC@OID :: Teaching Enhancement Center :: Office of Instructional Development

160 Powell Library, Box 951515 | Los Angeles, CA 90095-1515
web: www.oid.ucla.edu/tec | email: tec@oid.ucla.edu | tel: (310) 206-4599