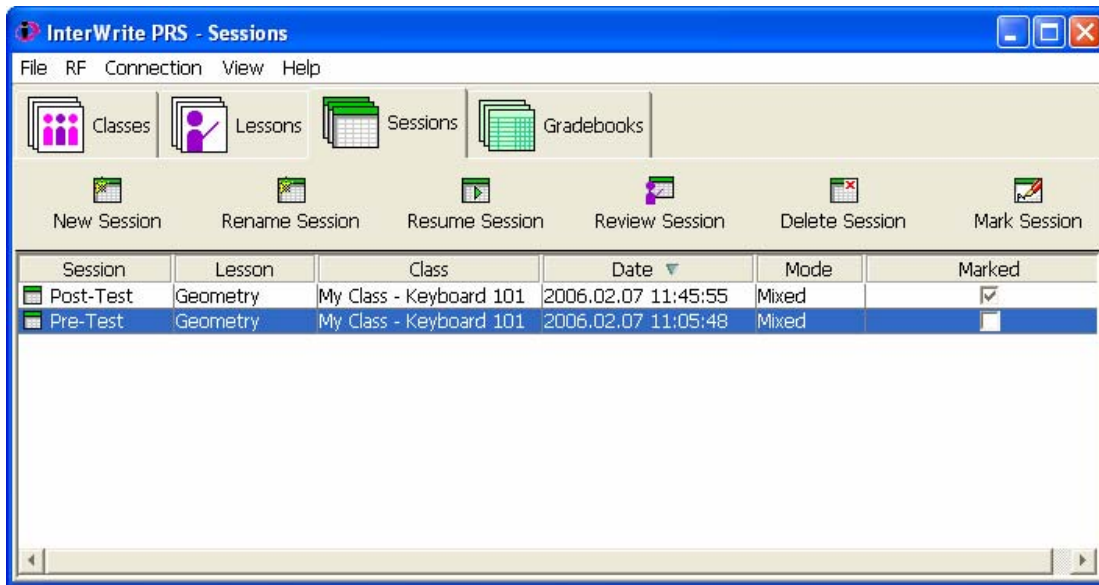


InterWrite PRS: Marking a PRS Session

After a PRS session has ended, the results are saved under the Sessions tab. Instructors can mark a completed session and add the scores to the Gradebook.



⇒ To mark a session, select the session from the list, then click **Mark Session**.



Please note: this button may not be visible unless you expand the PRS window.

The **Mark Session** window displays:

The screenshot shows the 'Mark Session: (Pre-Test.csv) Class: (My Class - Keyboard 101)' window. It has a toolbar with 'Close', 'Add Mark to Gradebook', and 'Statistics'. It also shows 'Correct Answer Multiplier: 2' and 'Wrong Answer Multiplier: 1'. The window is divided into 'Session Data' and 'Mark Data' sections. The 'Session Data' table has columns: Question, Name, Clicker ID, Studen..., and Respo... (bolded). The 'Mark Data' table has columns: Quest..., Answer, Points, Seat/Name, Student ID, Mark, Possible Po..., # Correct, and # Respond... (bolded). A 'Double-click to change value' instruction is centered above the tables.

| Session Data | | | | | Mark Data | | | | | | | | |
|--------------|-------------|------------|-----------|-----------------|-----------|--------|--------|----------------|------------|------|----------------|-----------|--------------|
| Question | Name | Clicker ID | Studen... | Respo... | Quest... | Answer | Points | Seat/Name | Student ID | Mark | Possible Po... | # Correct | # Respond... |
| 1 | Snake S... | 19 | 1919 | 2 | 1 | 3 | 1 | Snake S Key | 1919 | 4 | 6 | 1 | 3 |
| 1 | Reindee... | 18 | 1818 | 2 | 2 | 3 | 1 | Reindeer R ... | 1818 | 5 | 6 | 2 | 3 |
| 1 | Quail Q ... | 17 | 1717 | 1 | 3 | 2 | 1 | Quail Q Key | 1717 | 4 | 6 | 1 | 3 |
| 1 | Pig P Key | 16 | 1616 | 3 | 6 | 6 | 3 | Pig P Key | 1616 | 6 | 6 | 3 | 3 |
| 1 | Octopus... | 15 | 1515 | 3 | 6 | 6 | 3 | Octopus O ... | 1515 | 6 | 6 | 3 | 3 |
| 1 | Newt N... | 14 | 1414 | 3 | 6 | 6 | 3 | Newt N Key | 1414 | 6 | 6 | 3 | 3 |
| 1 | Monkey... | 13 | 1313 | 3 | 6 | 6 | 3 | Monkey M ... | 1313 | 6 | 6 | 3 | 3 |
| 1 | Llama L ... | 12 | 1212 | 3 | 6 | 6 | 3 | Llama L Key | 1212 | 6 | 6 | 3 | 3 |
| 1 | Kangaroo... | 11 | 1111 | 3 | 6 | 6 | 3 | Kangaroo K... | 1111 | 6 | 6 | 3 | 3 |
| 1 | Jaguar J... | 10 | 1010 | 2 | 5 | 6 | 2 | Jaguar J Key | 1010 | 5 | 6 | 2 | 3 |
| 1 | Insect I... | 9 | 909 | 3 | 6 | 6 | 3 | Insect I Key | 909 | 6 | 6 | 3 | 3 |
| 1 | Horse H... | 8 | 808 | 3 | 6 | 6 | 3 | Horse H Key | 808 | 6 | 6 | 3 | 3 |
| 1 | Goat G ... | 7 | 707 | 3 | 5 | 6 | 2 | Goat G Key | 707 | 5 | 6 | 2 | 3 |
| 1 | Frog F K... | 6 | 606 | 4 | 6 | 6 | 1 | Frog F Key | 606 | 4 | 6 | 1 | 3 |
| 1 | Zebra Z... | 26 | 2626 | 3 | 4 | 6 | 2 | Zebra Z Key | 2626 | 4 | 6 | 2 | 2 |
| 1 | Eagle E ... | 5 | 505 | 3 | 5 | 6 | 2 | Eagle E Key | 505 | 5 | 6 | 2 | 3 |
| 1 | Yak Y Key | 25 | 2525 | 4 | 4 | 6 | 1 | Yak Y Key | 2525 | 4 | 6 | 1 | 3 |
| 1 | Dog D K... | 4 | 404 | 3 | 6 | 6 | 3 | Dog D Key | 404 | 6 | 6 | 3 | 3 |
| 1 | Xray X K... | 24 | 2424 | 3 | 6 | 6 | 3 | Xray X Key | 2424 | 6 | 6 | 3 | 3 |
| 1 | Cat C Key | 3 | 303 | 3 | 6 | 6 | 3 | Cat C Key | 303 | 6 | 6 | 3 | 3 |
| 1 | Whale ... | 23 | 2323 | 3 | 5 | 6 | 2 | Whale W Key | 2323 | 5 | 6 | 2 | 3 |
| 1 | Bat B Key | 2 | 202 | 3 | 5 | 6 | 2 | Bat B Key | 202 | 5 | 6 | 2 | 3 |
| 1 | V Key V... | 22 | 2222 | 3 | 4 | 6 | 1 | V Key V Key | 2222 | 4 | 6 | 1 | 3 |
| 1 | Ant A Key | 1 | 101 | 3 | 4 | 6 | 1 | Ant A Key | 101 | 4 | 6 | 1 | 3 |
| 1 | Unicorn ... | 21 | 2121 | 3 | 6 | 6 | 3 | Unicorn U ... | 2121 | 6 | 6 | 3 | 3 |
| 1 | Turtle T... | 20 | 2020 | 3 | 6 | 6 | 3 | Turtle T Key | 2020 | 6 | 6 | 3 | 3 |
| 2 | Snake S... | 19 | 1919 | 3 | | | | | | | | | |
| 2 | Reindee... | 18 | 1818 | 3 | | | | | | | | | |

Only data in columns with a **bold heading** are editable: **Response, Answer, and Points**.

The left side of the window is **Session Data**.

This is a list of each student's response for each question, starting with question 1. You will probably need to scroll down through the list to see all the responses.

⇒ To change the sorting order of the list, click on a heading (**Question**, **Name**, **Student ID**, etc).

| Question | Name ▲ | Studen... | Respo... | |
|----------|------------|-----------|----------|---|
| 1 | Ant A Key | 1 | 101 | 3 |
| 2 | Ant A Key | 1 | 101 | 1 |
| 3 | Ant A Key | 1 | 101 | 1 |
| 1 | Bat B Key | 2 | 202 | 3 |
| 2 | Bat B Key | 2 | 202 | 2 |
| 3 | Bat B Key | 2 | 202 | 2 |
| 1 | Cat C Key | 3 | 303 | 3 |
| 2 | Cat C Key | 3 | 303 | 3 |
| 3 | Cat C Key | 3 | 303 | 2 |
| 1 | Dog D K... | 4 | 404 | 3 |
| 2 | Dog D K... | 4 | 404 | 3 |
| 3 | Dog D K... | 4 | 404 | 2 |

⇒ To change a response submitted by a student, double-click on the response, enter a new response, then click **OK**.

In the middle section of the Mark Sessions window is a list of the **Correct Answers** showing the question number, correct answer, and points awarded for the question.

| Q... | Answer | Points |
|------|--------|--------|
| 1 | 3 | 1 |
| 2 | 3 | 1 |
| 3 | 2 | 1 |

⇒ To change a correct answer, double-click on the answer, enter a new correct answer, then click **OK**. PRS automatically updates the student scores to reflect the new correct answer, but the changes do not affect the original lesson or other sessions.

⇒ To change the points assigned to a question, double-click on the point value, enter a new value, then click **OK**.

The right side of the window is **Mark Data**.

Each row shows one student's results:

- **Mark** (or total session score)
- **Possible Points** (for entire session)
- **# Correct** (correct responses)
- **# Responded To** (total responses)

| Name ▲ | Student ID | Mark | Possible Po... | # Correct | # Respond... |
|-------------|------------|------|----------------|-----------|--------------|
| Ant A Key | 101 | 8 | 12 | 2 | 2 |
| Bat B Key | 202 | 8 | 12 | 2 | 3 |
| Cat C Key | 303 | 8 | 12 | 2 | 3 |
| Dog D Key | 404 | 8 | 12 | 2 | 3 |
| Eagle E Key | 505 | 8 | 12 | 2 | 3 |

In many cases, instructors will want students to receive credit for responding to questions, regardless of whether their answer is correct. The **Correct Answer Multiplier** and **Wrong Answer Multiplier** allow instructors to assign credit for all responses.

| | | | |
|----------------------------|--------------------------------|--------------------------|--------------------------------|
| Correct Answer Multiplier: | <input type="text" value="2"/> | Wrong Answer Multiplier: | <input type="text" value="0"/> |
|----------------------------|--------------------------------|--------------------------|--------------------------------|

The Correct Answer Multiplier and Wrong Answer Multiplier are multiplied by the number of points assigned to each question to calculate the students' scores for a session.

⇒ If you want to give credit for wrong answers, set the Wrong Answer Multiplier to a number greater than zero. The Correct Answer Multiplier should be set higher.

Example:

An instructor has a lesson with 3 questions and makes each question worth 1 point. He sets the correct answer multiplier to 2. To encourage participation, he sets the wrong answer multiplier equal to 1 so students will get credit even if they answer incorrectly.

During the PRS session, Joe Bruin submits 2 responses (1 correct, 1 incorrect). He skips one question. He receives 2 points for the correct answer and 1 point for the incorrect answer. He receives no points for the question he skipped. **His total score is (1 x 2 point) + (1x1 point) = 3 points.**

Jane Bruin submits 3 responses (2 correct, 1 incorrect). She receives 2 points each for the correct answers plus 1 point for the incorrect answer. **Her total score is (2 x 2 point) + (1 x 1 point) = 5 points.**

| Correct Answer Multiplier: | | 2 | Wrong Answer Multiplier: | | 1 | | | |
|-------------------------------------|--------|--------|--------------------------|------------|------|----------------|-----------|--------------|
| Double-click to change value | | | Mark Data | | | | | |
| Correct Answers | | | Mark Data | | | | | |
| Ques... | Answer | Points | Seat/Name | Student ID | Mark | Possible Po... | # Correct | # Respond... |
| 1 | 3 | 1 | Bruin Joe | 1919 | 3 | 6 | 1 | 2 |
| 2 | 3 | 1 | Bruin Jane | 1818 | 5 | 6 | 2 | 3 |
| 3 | 2 | 1 | Doe Sally | 1717 | 4 | 6 | 1 | 3 |

⇒ To view session statistics, click **Statistics**.



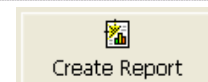
The statistics displayed are:

- **Number of Respondents**
- **Mean**
- **Standard Deviation**
- **Lowest Mark**
- **Highest Mark**

| | |
|------------------------|-----------|
| Mark Statistics | |
| Number of Respondents: | 26 |
| Mean: | 3.2307692 |
| Standard Deviation: | 1.4756404 |
| Lowest Mark: | 0 |
| Highest Mark: | 6 |
| OK | |

Instructors can create several types of reports for sessions including summary or detail reports by student or by question.

⇒ Select a session, click **Create Report**, select a report type, then click **OK**.



Session marks are NOT automatically added to the Gradebook. There are two ways to add a mark to the Gradebook:

⇒ In the Mark Session window, click **Add Mark to Gradebook**, then select a Gradebook and click **OK**.

⇒ Under the Gradebook tab, click **Add Mark**, then select a mark file and click **OK**.

The Gradebook displays student info, grade info, and marks for individual sessions.

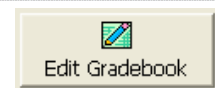
| StudentID | Name | Letter | Percent | Points | Possible | Quiz Post-Test Possible (12) | Quiz Pre-Test Possible (6) |
|-----------|--------------|--------|---------|--------|----------|------------------------------|----------------------------|
| 101 | Ant A Key | D | 66.7% | 12 | 18 | 8 | 4 |
| 202 | Bat B Key | C | 72.2% | 13 | 18 | 8 | 5 |
| 303 | Cat C Key | C | 77.8% | 14 | 18 | 8 | 6 |
| 404 | Dog D Key | C | 77.8% | 14 | 18 | 8 | 6 |
| 505 | Eagle E ... | C | 72.2% | 13 | 18 | 8 | 5 |
| 606 | Frog F Key | B | 88.9% | 16 | 18 | 12 | 4 |
| 707 | Goat G ... | A | 94.4% | 17 | 18 | 12 | 5 |
| 808 | Horse H ... | C | 77.8% | 14 | 18 | 8 | 6 |
| 909 | Insect I ... | A | 100% | 18 | 18 | 12 | 6 |
| 1010 | Jaguar J... | C | 72.2% | 13 | 18 | 8 | 5 |
| 1111 | Kangaro... | C | 77.8% | 14 | 18 | 8 | 6 |
| 1212 | Llama L ... | A | 100% | 18 | 18 | 12 | 6 |
| 1313 | Monkey ... | C | 77.8% | 14 | 18 | 8 | 6 |
| 1414 | Newt N ... | A | 100% | 18 | 18 | 12 | 6 |
| 1515 | Octopus... | A | 100% | 18 | 18 | 12 | 6 |
| 1616 | Pig P Key | A | 100% | 18 | 18 | 12 | 6 |
| 1717 | Quail Q ... | D | 66.7% | 12 | 18 | 8 | 4 |

The letter grade, percent, and points are automatically calculated based on marks. Only session marks (in blue) can be edited.

⇒ To edit a session mark, double-click on the mark, enter a new value, then click **OK**.

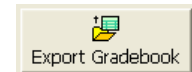
⇒ To edit Gradebook settings, click **Edit Gradebook** and set options under one of the tabs:

- **Information:** gradebook name
- **Appearance:** column display and text colors
- **Letter Grades:** numerical range and + / - scales



PRS Gradebooks can be exported in an XML format for import into some course management systems, such as Blackboard.

⇒ Click **Export Gradebook**, select a format, then click **OK**.



Instructors can create student grade or session grade reports from the Gradebook.

⇒ Click **Create Report**, select a report type, then click **OK**.



TEC@OID :: Teaching Enhancement Center :: Office of Instructional Development

160 Powell Library, Box 951515 | Los Angeles, CA 90095-1515
 web: www.oid.ucla.edu/tec | email: tec@oid.ucla.edu | tel: (310) 206-4599