

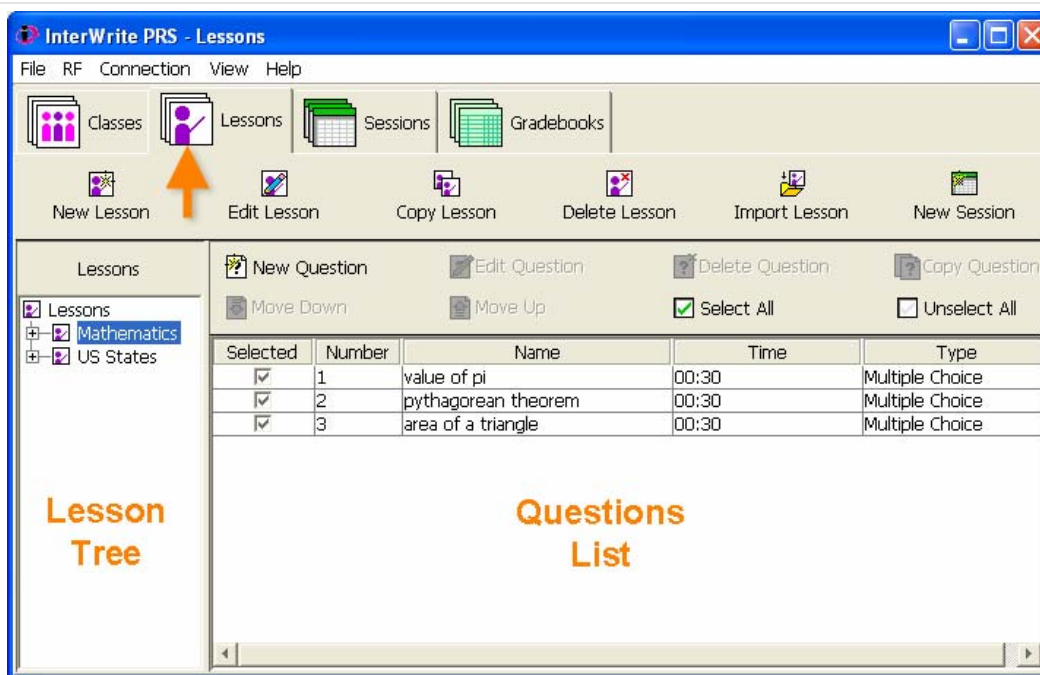
## InterWrite PRS: Creating a Lesson in PRS

InterWrite PRS Lessons contain questions to which students respond using the classroom clickers. Lessons can be created as part of a PowerPoint presentation but instructors who do not normally use PowerPoint may prefer creating lessons using the PRS software instead. Both lesson types have the same features and are tracked using the PRS Gradebook. This guide shows how to create lessons using the PRS software.

1. Launch the PRS software.

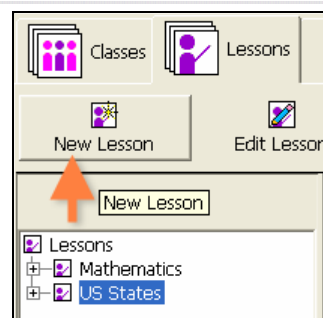
The PRS interface has tabs for each of four modules: **Classes**, **Lessons**, **Sessions**, and **Gradebooks**.

2. Select the **Lessons** tab to open the Lessons module.

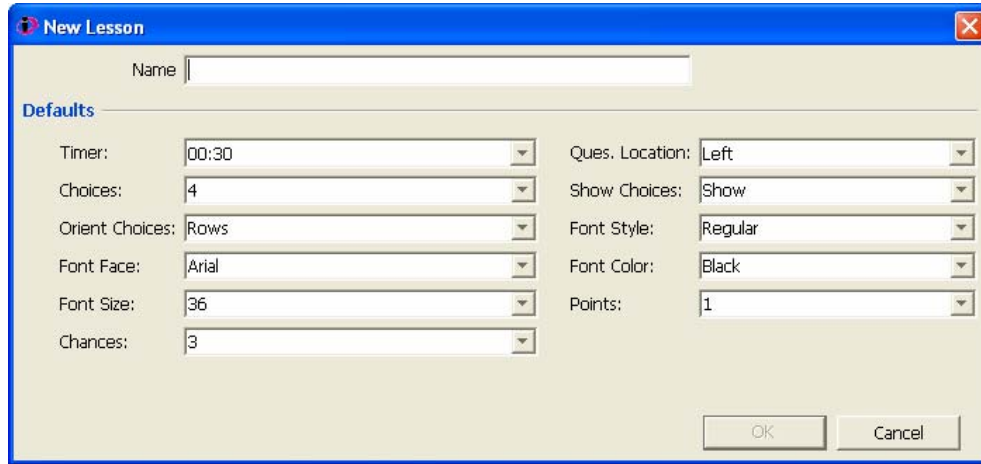


The left side of the module displays a **Lesson Tree** containing all the lessons and sub-lessons saved by the instructor. The right side of the module displays a **Questions List** with all the questions contained by the selected lesson in the lesson tree.

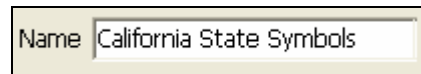
3. Navigate to the desired location in the lesson tree and click **New Lesson**.



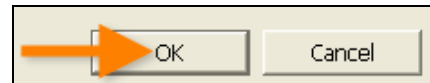
The **New Lesson** window opens:



4. Enter a **Name** for your lesson.

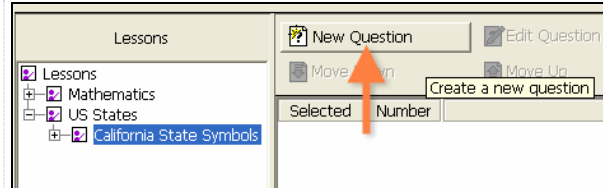


5. If desired, change any default settings for the questions in this lesson. You'll also be able to adjust these individually as you create each question.

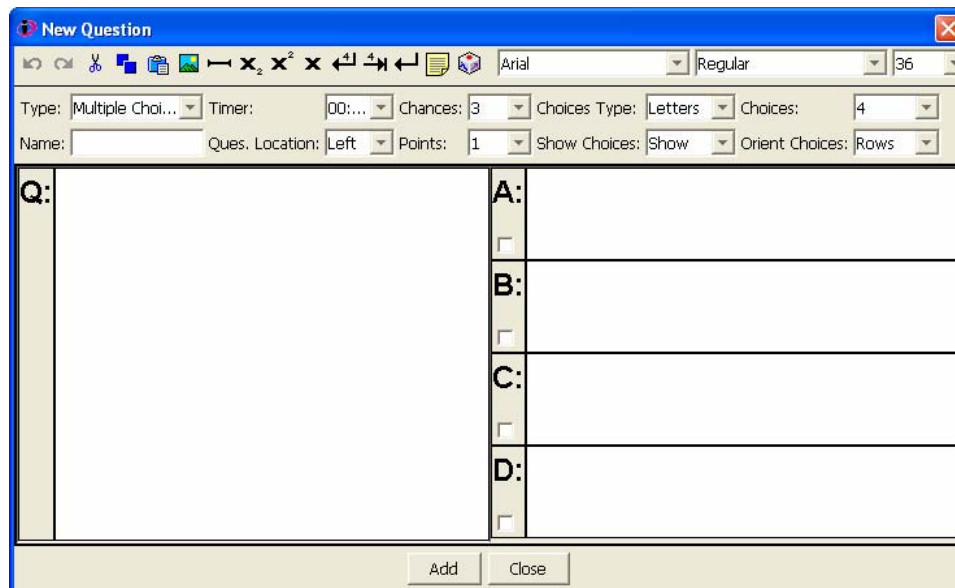


6. Click **OK** to close New Lesson window.

7. With your new lesson selected in lesson tree, click **New Question**.

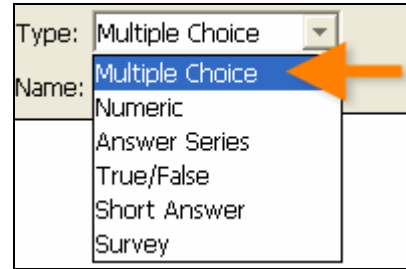


8. The **New Question** window opens:



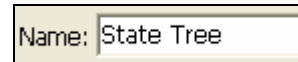
9. Select a **Question Type**:

- Multiple Choice
- Numeric (up to 11 characters)
- Answer Series (order)
- True/False
- Short Answer
- Survey



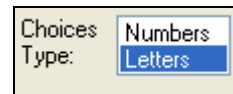
**Note:** Depending on the question type you select, the following steps will vary slightly.

10. Enter a **Question Name**.

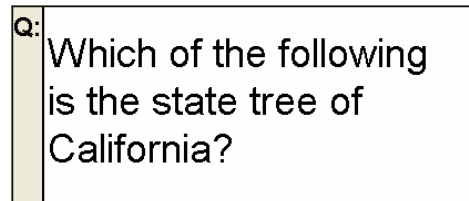


11. If desired, adjust the default settings for your question options:

- Question Timer
- Number of Chances
- Type of Choices (letters or numbers)
- Number of Choices
- Question Location
- Points
- Show/Hide Choices
- Choice Orientation

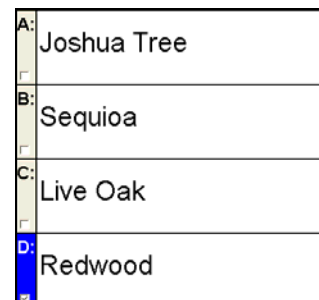


12. Enter the question text.



13. Indicate the **Correct Response**:

- For multiple choice questions, check the box(es) next to the correct answer choice. If you select more than one correct answer, students must enter all correct answers for their response to be considered correct.
- For numeric questions, type a numeric answer into the **Answer** combo box. You may need to scroll to the right in the PRS interface to see this field. Numeric answers can have up to 11 characters including an optional decimal point and minus sign.



*sample multiple choice*



*sample numeric response*

- For answer series questions, enter the correct series of numbers or letter in the **Answer** combo box. No spaces or separators are needed, and you will only be able to enter letters or numbers corresponding to the available choices.
- For true/false questions, select the button next to either **T/1** (true) or **F/2** (false).
- For short answer questions, enter up to 10 characters in the **Answer** combo box.
- For survey questions, [instructions TBD].

Answer: DCAB

sample answer series response

T/1

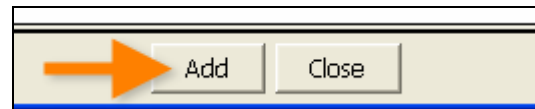
F/2

sample true/false response

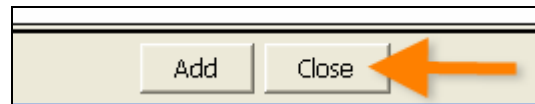
Answer: Sacramento

sample short answer response

14. Click the **Add** button located at the bottom of the New Question window.

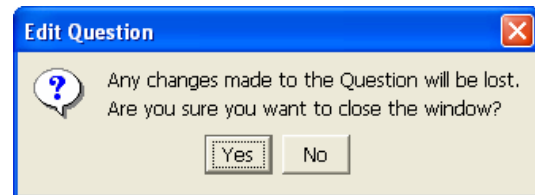


Your question is saved and a blank New Question form appears. Add more questions following the steps listed above.



15. When finished, click **Close**.

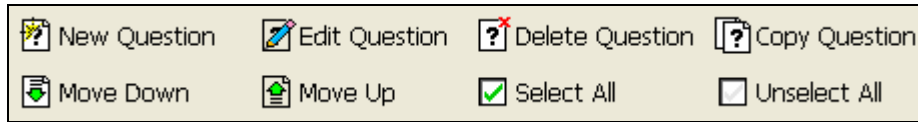
16. You'll see a warning that any changes made to the question will be lost; if you have already saved your final question (by clicking Add) and you now have a blank question form, click **Yes**.



You will return to the Lessons module and your new questions will appear in the Question List:

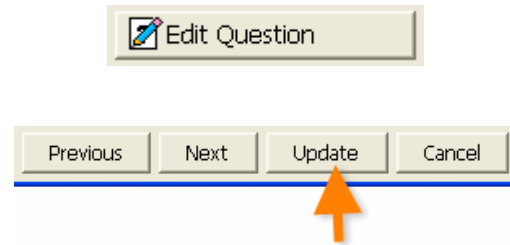
Selected	Number	Name	Time	Type
<input checked="" type="checkbox"/>	1	State Tree	00:30	Multiple Choice
<input checked="" type="checkbox"/>	2	Elevation of Mt. Whitney	00:30	Numeric
<input checked="" type="checkbox"/>	3	Grizzly Bears	00:30	True/False
<input checked="" type="checkbox"/>	4	Order of historical events	00:30	Answer Series
<input checked="" type="checkbox"/>	5	Capitol of California	00:30	Short Answer

At the top of the Question List are a series of buttons that allow you to edit, delete, or change the order of your questions. These buttons become active when you select a question from the list:



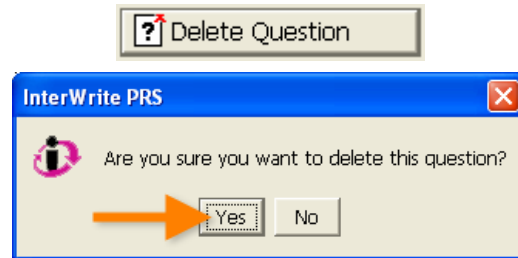
To edit an existing question:

17. Select the question from the list.
18. Click **Edit Question**.
19. Make changes to the question in the Edit Question window.
20. Click **Update**.



To delete a question:

21. Select the question from the list.
22. Click **Delete Question**.
23. Click **Yes** to confirm the deletion.



By default, all questions within a lesson will display during the PRS session.

To hide a question:

24. Uncheck the **Selected** box next to the question in the Question List.
25. When you've completed your lesson, close the PRS window.

Selected	Number	Name
<input checked="" type="checkbox"/>	1	State Tree
<input checked="" type="checkbox"/>	2	Elevation of Mt. Whitney
<input checked="" type="checkbox"/>	3	Grizzly Bears
<input checked="" type="checkbox"/>	4	Order of historical events
<input checked="" type="checkbox"/>	5	Capitol of California

Please refer to **PRS Sessions** guide to learn how to implement your PRS lesson in the classroom.

**TEC@OID :: Teaching Enhancement Center :: Office of Instructional Development**

160 Powell Library, Box 951515 | Los Angeles, CA 90095-1515  
 web: [www.oid.ucla.edu/tec](http://www.oid.ucla.edu/tec) | email: [tec@oid.ucla.edu](mailto:tec@oid.ucla.edu) | tel: (310) 206-4599